

CHIMMENS SOLAR FARM

JULY 2023



We wrote to you recently to advise that RES is exploring the potential for a solar farm on land between Horton Kirby and Fawkham.

Environmental and technical surveys have been ongoing in recent months to investigate the suitability of the site for a solar farm development. These surveys have informed a preliminary layout and design.

RES is keen to engage with the local community and gather feedback on the preliminary design. The feedback will be taken into consideration, along with the results of future site surveys and assessments, as we refine the design.

Public Exhibition

We will be holding a public exhibition in the local area to share more information about the project, the preliminary design and to enable you to provide us with your feedback. Members of the project team will be on hand to answer any questions or queries, and comment forms will be available to gather feedback.



We would like to invite you to a closed session from 11am to 1pm, prior to when the exhibition below opens to the public, to find out more about the project and ask questions.

**Monday 10th July
2pm to 7pm**

Fawkham Village Hall
Valley Road, Longfield DA3 8NA

All information provided at the public exhibition will also be available at:

www.chimmens-solarfarm.co.uk

from 10th July 2023.

The public exhibition is the start of a consultation period being run by RES to gather comments on the preliminary design. Feedback can be provided in writing by filling out a comment form at our public exhibition or online on our website.

We are requesting feedback on the preliminary design by 31st July 2023. Comments will still be accepted after this date but may not be considered in relation to the design development.

Please note that comments submitted to RES at this time are not representations to the determining authority (Sevenoaks District Council). There will be an opportunity to submit representations to the determining authority should an application be made.

Chimmens Solar Farm at a Glance

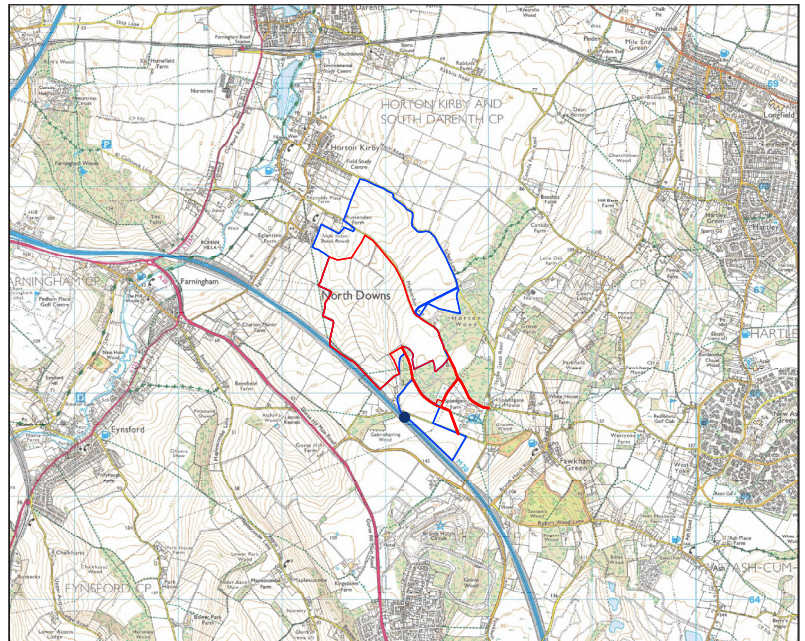
Chimmens Solar Farm is located on land between Horton Kirby and Fawkham.

It is anticipated that the solar farm would be capable of generating up to 49.9MW of clean, low-cost renewable electricity. This is enough to power approximately 22,500¹ homes, saving up to 15,000² tonnes a year of CO₂ compared to electricity from fossil fuels like gas.

Chimmens Solar Farm has many potential benefits:

- » Fighting climate change (which is a long-term threat to the countryside)
- » Local biodiversity enhancement opportunities
- » Local economic benefits (through business rates)
- » Improved energy security

The site has been chosen as it has good solar irradiation levels, lies outside of any statutory environmental, archaeological and landscape designations and due to its proximity to a viable grid connection.



● Site Location

© Crown Copyright 2023. All rights reserved. License number 0100031673.

In addition to the benefits above, we are asking the community for suggestions for further local benefits that the project could deliver.

About RES

RES, a British company, is the world's largest independent renewable energy company with operations across Europe, the Americas and Asia-Pacific. At the forefront of renewable energy development for over 40 years, RES has developed and/or built more than 23GW of renewable energy capacity worldwide.



Pauric McCloskey

Development project Manager

✉ pauric.mccloskey@res-group.com

☎ 07799 900 569



Vira Veselukha

Community Liaison Officer

✉ vira.veselukha@copperconsultancy.com

☎ 020 7935 1222

If you require information in Braille, large text or audio, please let us know.

¹ The homes figure has been calculated by taking the predicted average annual electricity generation of the site and dividing this by the annual average electricity figures from the Department of Business, Energy and Industrial Strategy (BEIS) showing that the annual UK average domestic household consumption is 3,509 kWh (Dec 2022).

² Based on Carbon Trust conversion figures for UK Grid electricity of 0.19338 kgCO₂e per kWh.